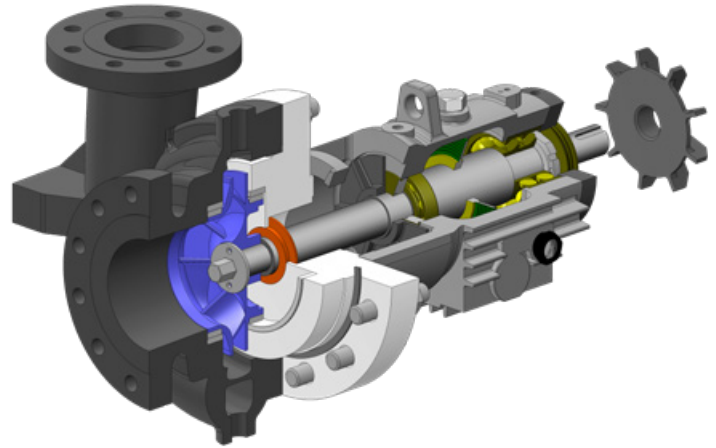


# Ordering the Right Pump from a Trusted Manufacturer: **A Buyer's Manual**





Oil and gas, food and beverage, mining and power generation, are only a few of the many industries that highly depend on the capacity of a reliable and trustworthy pump manufacturer to produce and deliver the right types of pumps needed to meet the demands of its customers to support daily business operations.

Pumps are important commodities especially for businesses that use them heavily to enhance their machinery and sustain their established systems. The strength, efficiency and dependability of the pumps utilized in a production environment affect output which can either enhance or disrupt the ability of their users to meet the demands of their own customers.

Having the knowledge to determine which pump manufacturer delivers the best products with the highest quality, reliability and efficiency is essential for anyone responsible for ordering the right pump that is compatible to a business' specific requirements.

There are a variety of pumps manufactured for commercial use, each designed to fulfill specific functions. Knowing what and how to order them from a trusted manufacturer that is able to provide superior products and excellent customer service is a major advantage that is vital to a business' growth, endurance and general success.

If you are a buyer, this article will guide you on the specific functions and applications of a particular industrial pump, the PWM API 610 Multistage Pump BB3, required by businesses that operate primarily in the petroleum industry. It will also introduce you to the business advantages of having a reliable and trusted pump manufacturing partner that will supply you with premium industrial pumps manufactured to meet the strictest industry requirements that will also be delivered to your specific locations securely and without delay.

# CONTENTS

The PWM API 610 Multistage Pump BB3	3
Entrust Your Pump Demands to an Industry Expert	4
Engineered, Manufactured and Tested in the USA	5
Prompt and Secure Delivery	6
Digitally Enhanced Machinery and Cutting Edge Customer Service System	7
Our Customers Come First	8
Your Reliable and Trusted Business Partner	9

## The PWM API 610 Multistage Pump BB3

One of the pumps in high demand from the petroleum industry is the PWM API 610 Multistage Pump BB3. It is a high-performance pipe designed to cover high-pressure pumping applications found primarily in oil refineries, petrochemical plants, gas processing, oil processing, offshore installations (platforms), hydrocarbon and crude oil pipeline and finished product pipeline services.



The PWM-BB3 Pump has a distinct design engineered to perform a variety of functions and usage that sustains but is not limited to the following systems and utilities: Boiler Feed Water, High Pressure Water Services, Crude Oil Pipeline, Crude Products Pipeline, Water Injection, High Pressure Condensate, Propane Transfer, Gasoline Pipeline Service, NGL Pipeline, Mine Dewatering, Water Flood, HP Amine Circulation, and High Pressure Refinery Services.

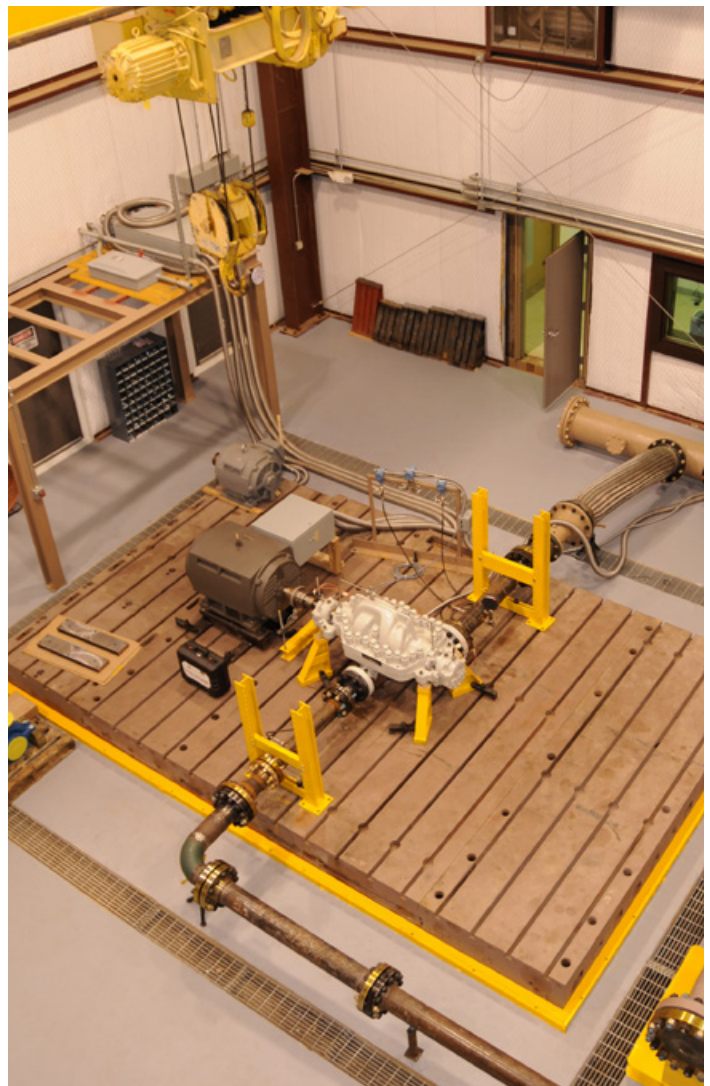


## Entrust Your Pump Demands to an Industry Expert

PumpWorks is a leader in manufacturing industrial pumps to serve and comply with the strictest product demands of businesses in various industries including Oil and Gas, Aviation and Alternative Fuels, Pulp and Paper, Food and Beverage, Primary Metals Manufacturing, Mining, Power Generation and Waste Treatment.

We specialize in manufacturing API 610 and ANSI Process Industrial Pumps, employing certified, highly trained and skilled personnel that are experts in their respective specialties in the field of pump manufacturing. We exclusively manufacture the current edition API 610/ISO 13709 centrifugal pumps that include the PWM BB3 Multi-Stage Split Case Pump.

Our products are designed to meet the industry's strictest standards and are fully compliant with the API 610 specifications. We also adhere to the specific requirements set by our business customers.



## Engineered, Manufactured and Tested in the USA

PumpWorks is headquartered in Houston, Texas, right in the heart of a thriving oil and gas industry. We value the importance of providing superior products to our customers and do not believe in compromising our reputation as a leader in the industry in favor of outsourcing for cost-saving purposes. Our products are all designed, developed, manufactured and tested in the United States for optimum quality.

We distinguish ourselves from other manufacturers by providing enhancements to our products and services as standard offerings rather than options. These features include providing Carbon Steel Wet Ends, Carbon Steel Bearing Housings, 316 ss shafting, and flinger disc splash lubrication.

Our testing capabilities fully administered in the United States using state-of-the art technology ensure we have a superior quality control system that allows us to abide by the strictest industry requirements as well as the individual demands of our customers.

To meet customer expectations, we implement a full range of in-house performance tests of ANSI pumps with ranges of up to 500 HP – variable speed, and up to 740 psig at flows of up to 7,500 GPM.

We value our customers' involvement in our development process by allowing them to witness the testing process administered within our unique "Witness Testing" facility. We provide them the option to watch the testing process through actual viewing in our facility or by watching the process online through our secure website.



## Prompt and Secure Delivery

At PumpWorks, we understand the importance of having your pumps delivered on time so you can comply with your business' timeline and promptly respond to your customers' demands. We know growth and revenue highly depend on production and we are committed to your success by ensuring your operations run smoothly without interruption.

Our extensive inventory located in different locations in North America can accommodate your pump requirements, guaranteed to be delivered to your specific business locations promptly and securely without delay, 24 hours a day, seven days a week, 365 days a year.

We guarantee an on-time delivery and ensure your pumps are transported to reach your specific locations right away. We are able to cut our lead time by 30 percent if we receive your order specifications as scheduled through our digitally enhanced and automated delivery system. At PumpWorks, we are committed to making the necessary



adjustments to ensure our products get to your business without delay.

For re-manufactured pumps, we offer a 70 percent lead time delivery versus what other manufacturers extend to their customers. We also provide a like-new warranty. To meet our high-quality standards, we utilize reverse engineering for our hydraulically re-rated, re-manufactured pumps that abide by industry specifications. They are processed with the same innovative PumpWorks-certified processes and machinery that result in superior functionality that will absolutely meet your business expectations.

## Digitally Enhanced Machinery and Cutting Edge Customer Service System

Precision is essential to implement a robust and excellent customer service. At PumpWorks, we utilize digitally enhanced systems to keep track of your information with accuracy and hassle-free accessibility. To ensure we can deliver your products to the exact location on time without delay based on your specific instructions, we employ only the latest high-tech automated systems and machinery.

We value efficiency in providing unparalleled customer service by ensuring prompt delivery of our products as well as manufacturing our pumps with utmost diligence through the use of cutting-edge technology.

Our facility located in Houston, Texas, is fully equipped with state-of-the-art machinery powered by intelligent technology. It also houses multiple cut and multiple station CNC centers that enable a faster and more efficient manufacturing and production process. The turnaround time is extremely faster resulting from higher productivity. Through our exceptional systems, our daily operations enable us to serve our customers better through enhanced quality output and an exceedingly greater number of pumps produced in less time.





## Our Customers Come First

At PumpWorks, we regard our customers with the highest importance. This philosophy is the blood that flows through our company's veins that is evident in the way we respond to the needs and demands of our customers by producing only superior and top-quality industrial pumps, designed, engineered, manufactured, and tested by our own team of exceptionally skilled and highly trained industry experts.

Our operations are entirely administered in our fully-equipped facilities in the United States using state-of-the-art machinery and cutting-edge technology. We do everything in-house, which enables us to be more flexible to respond to the specific needs of our customers as well as comply with theirs and the pump manufacturing industry's strictest standards.

We own our foundry and have the flexibility to customize our production time based on the timeline of our customers. We implement the necessary changes in order to respond to the requirements of our customers even in the middle of production without compromising the integrity of our products and services.



## Your Reliable and Trusted Business Partner

As your business partner, we have your back covered.

We will serve your business with utmost importance as your trusted and reliable manufacturing supplier. We are committed to ensure your own inventory is sustained with fully-functional industrial pumps that will support and enhance your business operations without disruption.

At PumpWorks, you and your business are in good hands. Together, we will nurture the growth of your commercial venture for higher profitability, leadership, and longevity in your respective industry.

To learn more about our products and services, contact us at **888-405-0209** or email us at **info@pumpworks.com**. For more information, you can visit our website **www.pumpworks.com**

