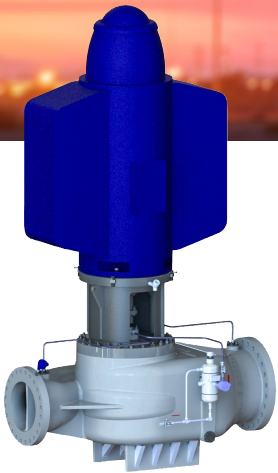




Made *Right* in the USA



The Model PWI-D API 610, Vertical In-line-Double Suction Impeller, OH4.

- Designed as an Ideal option for Tank Transfer or Pipeline Booster pump applications where NPSHa is very limited.
- Compact design significantly reduces installation cost when compared to baseplate mounted BB1 style pumps.
- No need for expensive concrete foundations – Installs like a Valve.
- Depending upon NPSHa it can often be used in lieu of costly VS6 pumps.

Quality

- Manufactured and tested in the USA

ePOD Pump Selector

- Access to end users and specifiers to select your pump online at www.pumpworks610.com – no password or login required

Driver Stand

- Motor positioning lugs with bolts to facilitate alignment
- Generous window access allows for easy seal maintenance.

Coupling

- Radially split spacer coupling allows mechanical seal to be removed without disturbing the driver

Casing Cover and Seal Chamber

- API 610 seal chamber allows user to install any API 682 cartridge seal to meet process requirements
- Renewable throat bushing for controlled seal chamber environment
- Flat surface seal gland for O-Ring sealing
- Optional machined gasket area for higher temperature applications or on customer's request

Driver

- Motor shaft and base tolerances in accordance with API 610 requirements.
- Motor bearings designed for radial or axial loads transmitted from the pump.
- Motor bearing design and life per API 610 requirements.

Pump Casing

- Precision machining and fully confined controlled compression gasket ensures proper sealing and ease to cover alignment
- ANSI 300# Class RF Flange standard, hydro test pressure 1100 psig requirements

Throat Bushing

- Graphalloy Throat Bushing
- Non-galling, superior wear resistance
- Allows for tight running clearances to minimize shaft runout

Nozzle Load

- Casing design meets current edition API 610 Nozzle Load requirement

Seal Flush Plans

- Wide range of API Seal Flush Plans available—optional Seal leak detection system API SFP 65 shown.

Casing

- Designed for use with or without a mounting plate

Renewable Casing and Impeller Wear Rings

- Front and back rings control seal chamber pressure and provides impeller stability
- Optional non-metallic rings for improved efficiency

Impeller Retention

- Keyed and secured to shaft with exclusive dual set-screw locknut

Impeller

- Double suction impeller designed for low NPSH services
- Dynamically balanced to 4W/N before mounting

Delivery

- 18 weeks for API 610 material class S-6, S-8, and C-6
- Refer to the factory on deliveries for other API material classes and customer specific material combinations



PumpWorks. The only pump company to offer a full line of API and Industrial products 100% Made *Right* In the USA.



The PumpWork Difference

- Manufactured and tested in the United States
- Access for end users and specifiers to select, configure and estimate their pump online at www.pumpworks610.com



PWH API 610 Process Pump

PWH is the PumpWorks 610 API 610 current edition overhung OH2 process pump in API 610 material classes S-6, S-8, C-6 and A-8. Other materials combinations are available. The pumps are built, assembled and performance tested in full compliance with API 610 in Tyler, Texas USA.

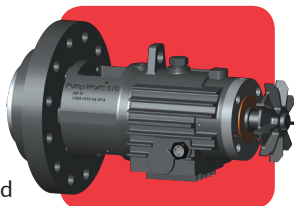


- Shorter lead times than the competition – 16 weeks for API 610 Material Classes S-6, S-8 and C-6

See our PWH API 610 Single Stage OH2 Brochure for more information.

PW-11 API 610 Upgrade Program

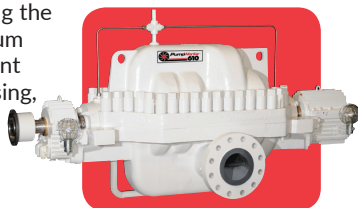
PW-11 is the PumpWorks 610 retrofit upgrade kit that meets API 610 current edition for horizontal single stage OH2 process pumps. The kit ensures petroleum refineries have a fast and cost-effective way to upgrade any brand of existing OH2 process pump and achieve API 610 current edition requirements without expensive changes to the wet end (casing and impeller) and piping.



See our PW-11 API 610 Upgrade Program Brochure for more information.

PWM API 610 Multistage Pump

PWM pump is designed for covering the full range of High Pressure petroleum refinery services, petrochemical plant services, gas processing, oil processing, offshore installations (platforms), hydrocarbon and crude oil pipeline and finished products pipeline services.



- Shorter lead times than the competition – 26 weeks for API 610 material class S-4, S-6, S-8, C-6 and A-8

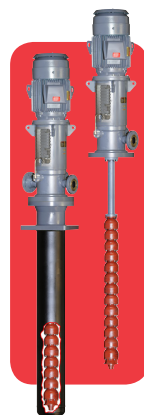
See our PumpWorks 610 Multistage Pump Brochure for more information.

PWV API 610 Vertical Turbine Pump

PWV is the PumpWorks 610 API 610 current edition VS6 and VS1 vertical turbine pump in API 610 material classes S-1, S-4, S-5, S-8 and A-8. Other material combinations are available. The pumps are built, assembled and performance tested in full compliance with API 610 in Tyler, Texas USA.

- Shorter lead times than the competition – 16 weeks in API 610 Material Class S-1

See our PWV API 610 Vertical Turbine VS6 (Can Type) and VS1 (Sump Type) Brochure for more information.



PWI-BB API 610 Vertical In-Line Single Stage OH3

The PWI-BB is an API 610, OH3 heavy duty bearing bracketed vertical in-line pump designed to cover a wide range of applications found in petroleum processing facilities, gas processing, petrochemical, offshore installations (platforms), hydrocarbon and crude oil terminal and aviation (jet) fueling applications.

- Shorter lead times than the competition – 16 weeks for API 610 material class S-6, S-8 and C-6

See our PWI-BB 610 Vertical In-Line Single Stage OH3 Brochure for more information.

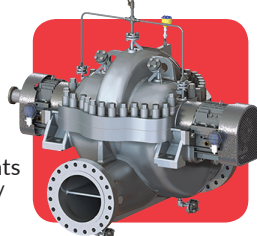


PWD API 610 BB1 Horizontal Split Single Stage Pump

The robust BB1 PWD is an axially split, single stage, horizontal, between bearing pump. Our heavy duty casing with multiple mounting options for temperature and liquid requirements afford our customers with application specific/ custom hydraulics designed to meet even the aggressive of pumping requirements. The PWD is designed for critical heavy-duty process applications like refining applications that include cooling water, distillation and sulfur recovery. The PWD is a versatile pump for loading, boiler feed boosting, crude oil pipeline, desalination and water transfer.

- The PWD delivers in 28 weeks

See our PWD API 610 BB1 Horizontal Split Single Stage Pump Brochure for more information.



Online Pump Selection with ePOD

Visit our website at www.pumpworks610.com and specify flow and performance needs and obtain pump selection and performance curve.



PumpWorks • www.pumpworks.com

8885 Monroe • Houston, TX 77061 • Ph. 888-405-0209 • Fax 713-956-2141
www.pumpworks.com • twitter: @PumpWorks