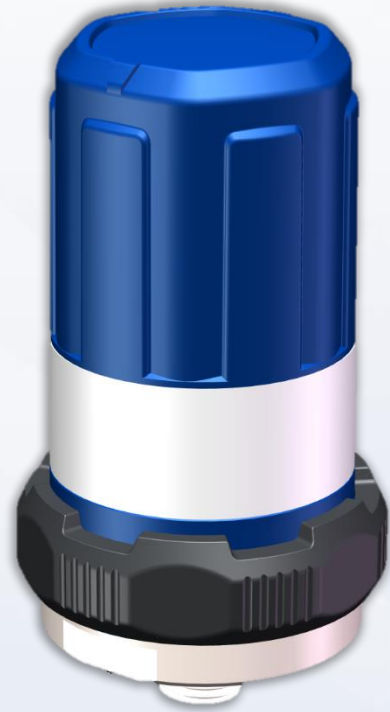


PredictPlus™ YOUR PUMP WANTS TO TALK TO YOU™

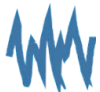
Predict-Plus is the Only Wireless and Cellularly Cloud Connected Machinery Health Monitor Designed Specifically for Your Rotating Equipment Needs

- 24/7 online vibration and temperature monitoring device
- Automatic device registration on the cloud via cellular interface
- Proactive alerts from the Predict-Cloud
- Long term storage of trend data including Fast Fourier Transform (FFT)
- Affordable & available for new and existing rotating equipment



ALWAYS ON

Predict-Plus is CONTINUOUSLY monitoring and logging your pump's health.



VIBRATION

Overall RMS vibration alerts can be used to indicate a fault condition and FFT harmonic data can be used to diagnose the issue



BEARING TEMPERATURE

Temperature is monitored via the integrated thermocouple to detect improper run conditions and failure modes



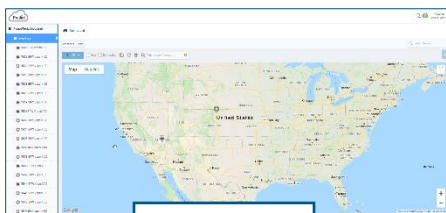
ALERTS

Proactive Alerts send automatically via email and SMS from the Predict-Cloud.

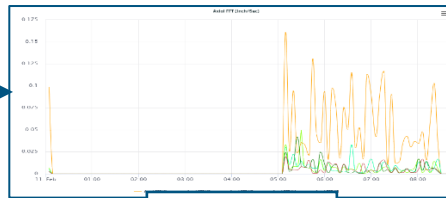


PredictPlus™ YOUR PUMP WANTS TO TALK TO YOU™

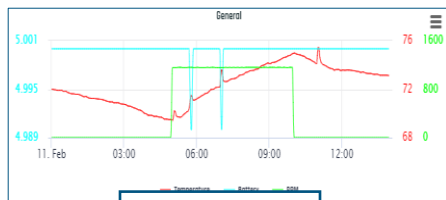
Predict-Cloud is a powerful tool in attaining the goal of reducing maintenance spending and increasing MTBR (Mean Time Between Repairs). By proactively identifying detrimental system conditions prior to catastrophic machine failure.



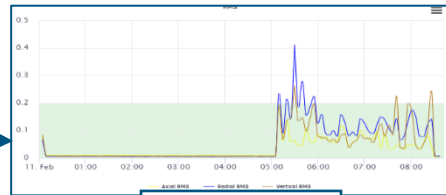
Dashboard



FFT Vibration



General Data



RMS Vibration



Go to www.predict-cloud.com

Or



Physical

- Footprint: 2" x 4.5" including thread
- Case Material: Stainless Steel and Nylon
- Battery Voltage (3 AA): 4.5VDC
- Mountable via integrated 1/4" NPT stud or with 1/4"-20 tapped hole

EDGE Computing

- Tri-axial vibration monitoring IPS
- Temperature monitoring $\pm 5^{\circ}\text{F}$
- Real-time RPM calculation
- Real-Time Axial, Vertical, and Horizontal RMS
- Real-Time Axial, Vertical, and Horizontal FFT
- Operational time monitoring

Notifications

- RMS threshold cross alert
- Operational time threshold cross alert
- Temperature threshold cross alert
- Low battery alert

Communication

- Within the US, the device can communicate over AT&T, T-Mobile, or Verizon 4G LTE depending on optimal service in the area.
- Global chipset for communication in 107 countries without additional communications hardware.

Operation Modes

- Battery (Low Power): 3 AA; Up to 4 samples per hour and 1 scheduled cloud upload per day.
 - Battery Life: 1 year in temperatures -40°F to $+140^{\circ}\text{F}$
 - Batteries must be changed in an area free of ignitable concentrations.

User Interface

- Internet Browser; Microsoft Edge, Google Chrome, Mozilla Firefox, Apple Safari
www.Predict-Cloud.com
- Mobile App: Predict-Cloud on iOS and Android

Standards (Pending Certification)

- Class I, Division I - pending certification
- IP66/NEMA 4X enclosure
- RoHS Compliant

Environmental Conditions

- Operating Temperature: -22°F to $+158^{\circ}\text{F}$
- Relative Humidity: 90%
- Water & Dust Spray Resistant (IP66)