



**BASETEK**

**POLYMER CONCRETE BASEPLATES**

## Advantages of Zanite® Plus Baseplates

- Flat mounting surface to 0.002"/foot.
- Significantly better vibration damping compared to conventional steel bases.
- Reduces grouting and installation problems, saving time and money.
- ASME/ANSI-1991 dimensionally compliant.
- Excellent resistance to twisting and diaphragming.
- Corrosion resistant to most chemicals.
- Environmentally friendly.
- Process Industry Practices (PIP RESP002) Compliant
- Multiple inserts for all motor frames standard on PoxyBase®.

## PoxyBase® with POLYMER COMPOSITE

### STAINLESS THREADED LEVELING INSERTS

For fast, accurate leveling of baseplate. Standard on all bases.

### MADE FROM ZANITE®PLUS

A proprietary formula combining Epoxy resins with quartz aggregate for exceptional strength and corrosion resistance throughout.

### STAINLESS STEEL PUMP & MOTOR INSERTS

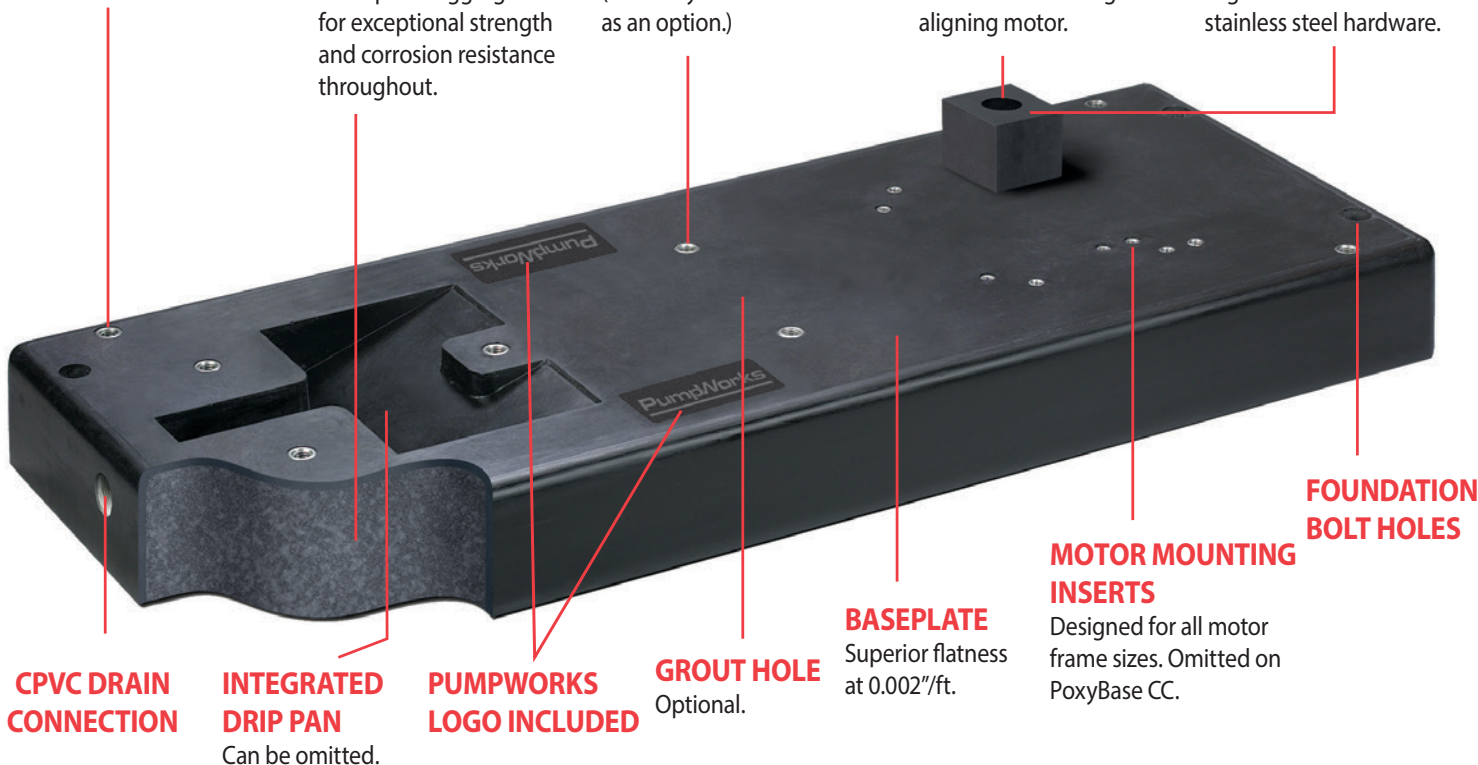
Provide excellent corrosion resistance and durability. (Hastelloy C-276 available as an option.)

### RISER BLOCK COUNTERBORE

Enables blocks to be securely fastened to base while installing and aligning motor.

### POLYMER MOTOR RISER BLOCKS

Flatness of 0.001"/ft. make for accurate motor/pump alignment. Includes stainless steel hardware.

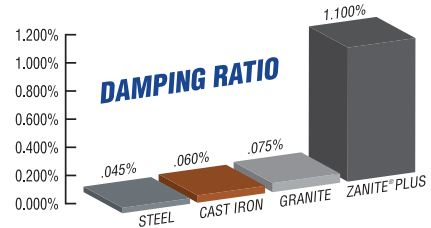


## Why Zanite® Plus is Better

<b>FLATNESS</b>	✓	0.002" PER FOOT
<b>COMPRESSIVE STRENGTH</b>	✓	18,000 PSI
<b>CORROSION RESISTANCE</b>	✓	EXCELLENT
<b>DEFLECTION</b>	✓	RIGID — WILL NOT BEND
<b>VIBRATION DAMPING</b>	✓	HIGHEST
<b>INSTALLED COST</b>	✓	LOWEST

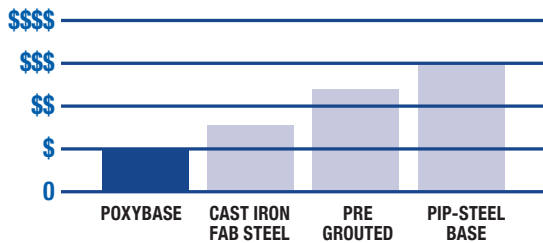


Recyclable • Natural Fillers  
Save Energy  
Reduces Carbon Footprint  
(learn more at [www.bastek.com/go-green](http://www.bastek.com/go-green))



## Compare Typical Installations Costs\*

Using Zanite Plus baseplates instead of conventional steel bases with comparable features will result in significant installation savings.



\* Comparative costs include baseplate, 316SS drip pan, sandblast and 2-part epoxy system which would yield a product with similar properties as the PoxyBase.



### UNIBLOCK WITH UBAK ADJUSTERS

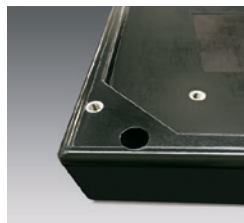
For one-piece motor supports and precise alignment.

## Baseplate Options



### POXYBLOCK® KITS

Includes all Stainless Steel hardware.



### DRIP RIM

Optional for increased fluid containment.



### BiD® MOTOR ADJUSTERS

For fast, precise alignment.



### STILT MOUNTING KITS

For non-grouted installations.



**GREENSHIELD** — a patented monolithic foundation system combining both the equipment mounting surface and traditional concrete pad into one integrated design. Each foundation is cast with rugged walls containing internal reinforcements eliminating common stress cracking. Precision mounting surfaces along with integrated PoxyVials™ and optional CenterMark™ laser aids to speed and insure proper installation. Typical installations are completed in 1-day. **GREENSHIELD — WE MAKE IT EASY!**